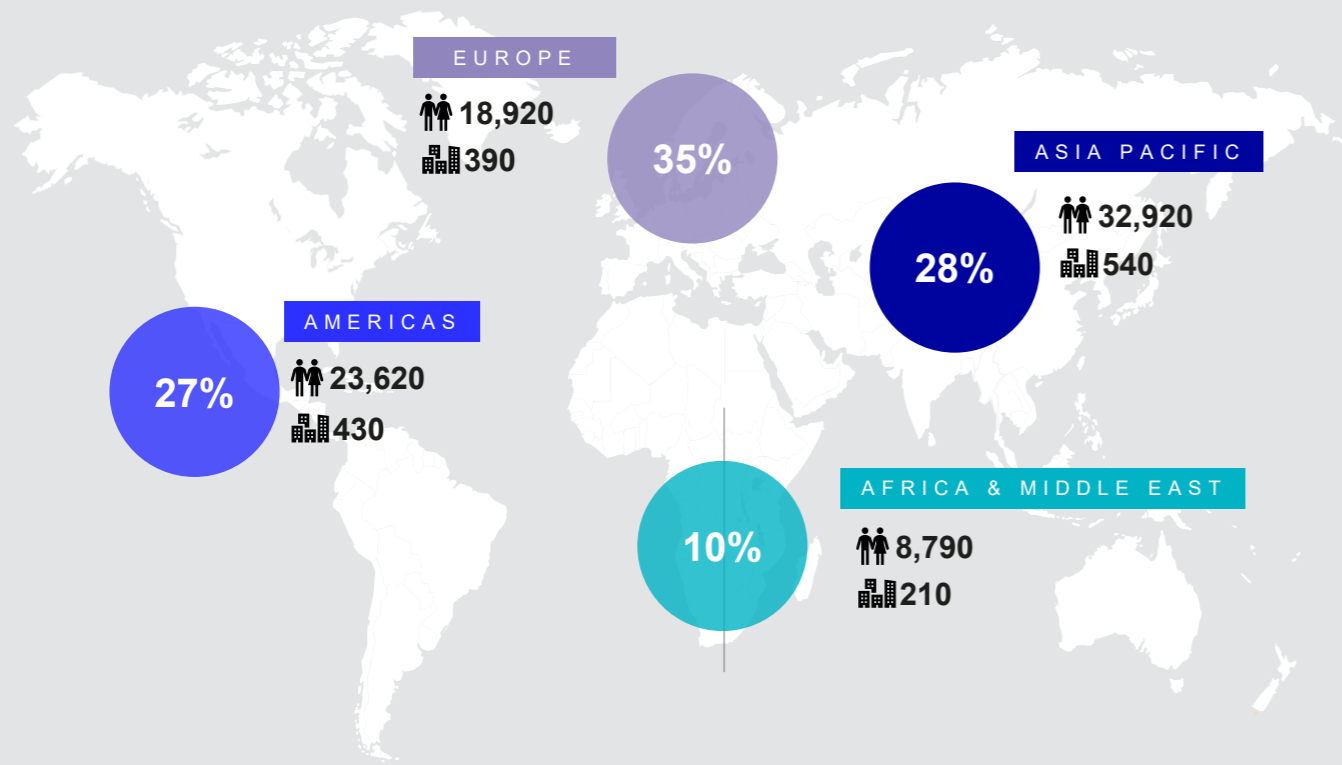


PROJECT MANAGEMENT CONSULTANCY



**BUREAU
VERITAS**

REVENUE AND WORKFORCE BREAKDOWN



By geography, as of December 31, 2024

THREE ABSOLUTES



SAFETY



ETHICS



FINANCIAL CONTROL

MARKETS



OUR BUSINESSES



PROJECT MANAGEMENT CONSULTANCY



IT PROVIDES ASSISTANCE TO CLIENT WITH REGARDS TO TENDER FORMATION AND DOCUMENT CONTROL AND PROVIDE PROJECT CONSTRUCTION MANAGEMENT SERVICES TO UNDERTAKE PROJECT SITE SUPERVISION, QUALITY MANAGEMENT, SAFETY MANAGEMENT AND TIMELY DELIVERY OF PROJECT WITH PREDEFINED OUTPUTS.

Project management system is a comprehensive perceptive one which comprises of national & international standards. To maintain the desired level of quality & safety with consistency in our service provision.

We implement the following key elements within our working process:

- **Matching resources to business priorities:** For optimal resource utilization
- **Systems and processes:** To provide a standard platform for project team to perform.
- **Procedures:** To implement and follow standardised practise through out the life cycle of any project.
- **Resilience and recovery:** To ensure that all staff can carry out their work in the event of either system failure or unforeseen local or global events
- **Quality Assurance:** To provide quality assurance with the appropriate technical discipline with regular quality audits.
- **Reporting:** To follow a proactive reporting system to clarify and agree a client's priorities in advance along with aspects of our service that are critical to our service standards.

PROJECT METHODOLOGY & PROCESS

ON COMMENCEMENT BUREAU VERITAS WILL PREPARE A **PROJECT EXECUTION PLAN (PEP)** BASED ON THE BRIEF & PROJECT REQUIREMENT FROM THE CLIENT & STAKEHOLDERS.

The PEP is a provision of a consolidated integrated management methodology including Project Strategy, Roles / Responsibilities, Project Structure, Communications, Approval Process, Information Release and Procurement Advice.

01 Identifying the project objectives and parameters (time, quality and cost)

02 Establishing project execution strategies and priorities

03 Identifying factors which may comprise the execution of the project

04 Defining major interfaces and dependencies - organisational and functional

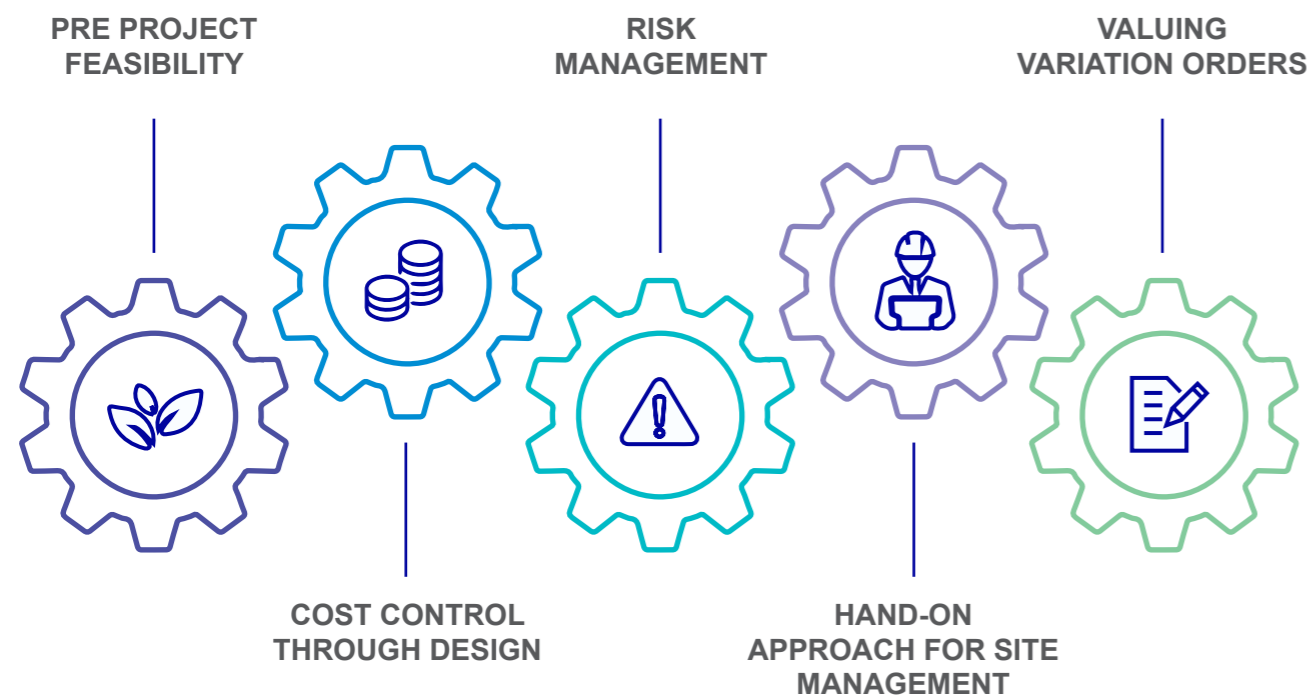
05 Setting a framework for the development of project systems and procedures

06 **Design Review and Proof Checking**
Reviewing and checking design parameters, drawings, specifications, calculations during the preliminary and final design stage



AS THE PROJECT EVOLVES, THE DOCUMENT WILL BE AMENDED AND REISSUED WITH THE AGREEMENT OF THE PROJECT TEAM

PRINCIPLES



PRE PROJECT FEASIBILITY

Our approach to sustainability includes the development of strategic briefs to bring together the current information and the end user requirements at the beginning of the design stage. Due to our clear understanding of design engineering and execution of designing in form of construction, overlapping both the constraints provides a sustainable solution which aides in project efficiency as an end user's benefit.

COST CONTROL THROUGH DESIGN

To meet the challenge and to secure the right design solution within the project's cost constraints requires a change from the traditional 'design then cost' approach. We would adopt a pivotal role in ensuring that the cost plan and targets relate to the designs, to communicate to the team the cost budgets and targets.

RISK MANAGEMENT

The management of risk is a continuous process throughout the life of the project and not just a 'one off' exercise. Therefore we recommend & maintain that the risks should be continually monitored and managed throughout the project period.

Risk management provides the following benefits:

- Reduced risk, increased awareness
- Clarification of project objectives
- Early warning system and contingency planning
- Overview, and elimination of knowledge gaps
- Understanding of who is best placed to manage risk
- Robust, auditable, framework for detailed management planning and decisions
- The ability (utilising our optional quantitative risk modelling services) to calculate suitable contingency levels for costs and/ or programmes

HAND-ON APPROACH FOR SITE MANAGEMENT

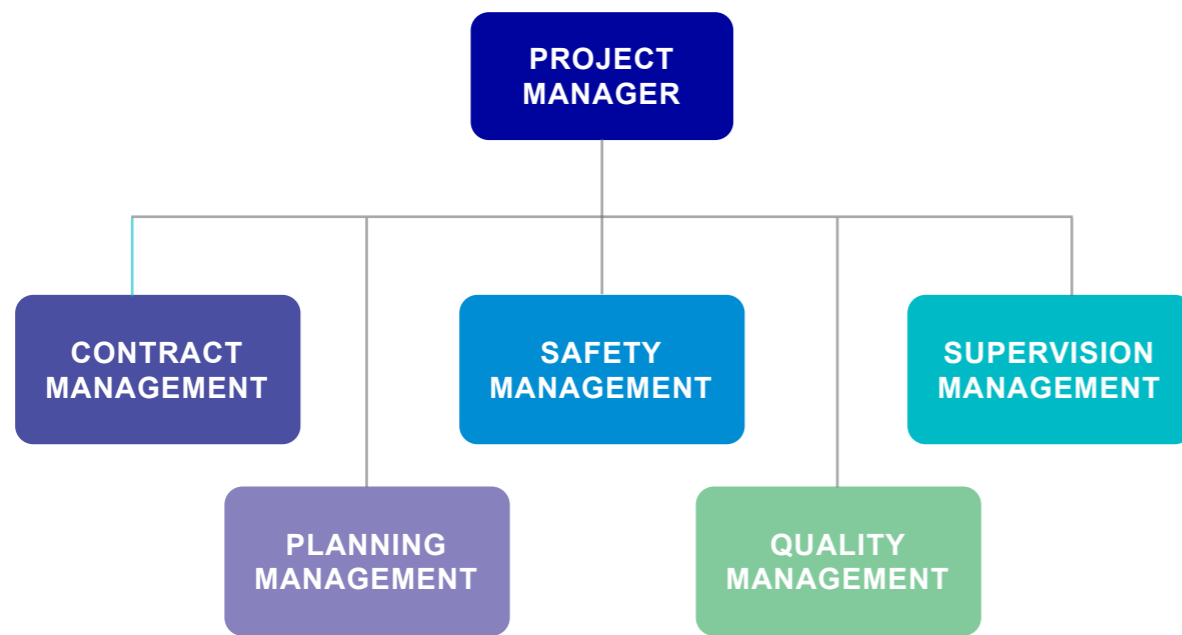
Hands-On approach is very crucial for successful completion of any project. Checking the actual work progress in comparison with the agreed activity schedule by the contractor, and maintaining the record of actual work done by the contractor every week. Valuing the works in progress and submitting monthly recommendations

VALUING VARIATION ORDERS

It includes measuring, pricing, negotiating and finalizing with the contractors and sub-contractors



PROJECT STRUCTURE



SERVICES RENDERED

	Design Outline	Scheme Design	Tender	Construction
Cost Management	<ul style="list-style-type: none"> Establish Budgets Appoint Consultant Team Establish Limits/Client Expectations 	<ul style="list-style-type: none"> Cost Plan Based on Preferred Option Update budgets Establish cash flow 	<ul style="list-style-type: none"> Tender Documents Cost Checking Review Prelims Review tender documents Modify Cash flow 	<ul style="list-style-type: none"> Cash Flow During Construction Valuations Cost Control with issue of Variations
Design Management	<ul style="list-style-type: none"> Design Option study Undertake Surveys Issue standard Design Info Establish Information Required 	<ul style="list-style-type: none"> Input Survey information Statutory Inputs-Planning and Building Regulations Specialist Design Inputs 	<ul style="list-style-type: none"> Detailed Technical Design Detailed Technical Specifications 	<ul style="list-style-type: none"> Design Detailing Enquiries related to design
Procurement Management	<ul style="list-style-type: none"> Review Options Issue Reports 	<ul style="list-style-type: none"> Update Procurement Report List of Contractors* 	<ul style="list-style-type: none"> Selected Tender Check Compliance Specialised Sub-contractors Establish Long Lead-in 	<ul style="list-style-type: none"> Place Orders with suppliers independent of the Main Contractor
Quality Management	<ul style="list-style-type: none"> Establish Design Inputs/ Specialists Reporting Format Meeting Format Change control procedure 	<ul style="list-style-type: none"> Quality Audit Gateways Modify change control 	<ul style="list-style-type: none"> Review Quality of Tender Returns Modify Gateways Modify change control 	<ul style="list-style-type: none"> Quality Checks by Design Team Defects Period Modify Change control
Construction Management	<ul style="list-style-type: none"> Pre-contract Procurement Construction Assessment Establish Design Deliverables Master Programme 	<ul style="list-style-type: none"> Update Programme 	<ul style="list-style-type: none"> Construction Programme along with contractor 	<ul style="list-style-type: none"> Update Construction Programme Resource Scheduling Site Management and Monitoring Finish Date on Site
Risk Management	<ul style="list-style-type: none"> Unclear or inadequate brief Environmental Risks in terms of Design impact 	<ul style="list-style-type: none"> Planning issues inadequacy of Design Working hours 	<ul style="list-style-type: none"> Form of procurement Design Liability Selection of appropriate contractor 	<ul style="list-style-type: none"> Leadership Experience and attitude of the team



**BUREAU
VERITAS**

Shaping a World of Trust

SHAPING A WORLD OF TRUST

Bureau Veritas is a Business to Business to Society service company, contributing to transforming the world we live in. A world leader in testing, inspection and certification, we help clients across all industries address challenges in quality, health & safety, environmental protection and social responsibility.

REGISTERED OFFICE

BUREAU VERITAS (INDIA) PVT. LTD.

72 Business Park, Ground Floor,
Marol Industrial Area, MIDC Cross Road 'C',
Andheri (East), Mumbai - 400 093. India.

Tel.: +91 22 62742000

E-mail: bvindia.corporate@bureauveritas.com

www.bureauveritas.co.in

For any queries or concerns,
please call us on +91 970 272 1828



**BUREAU
VERITAS**

Shaping a World of Trust